

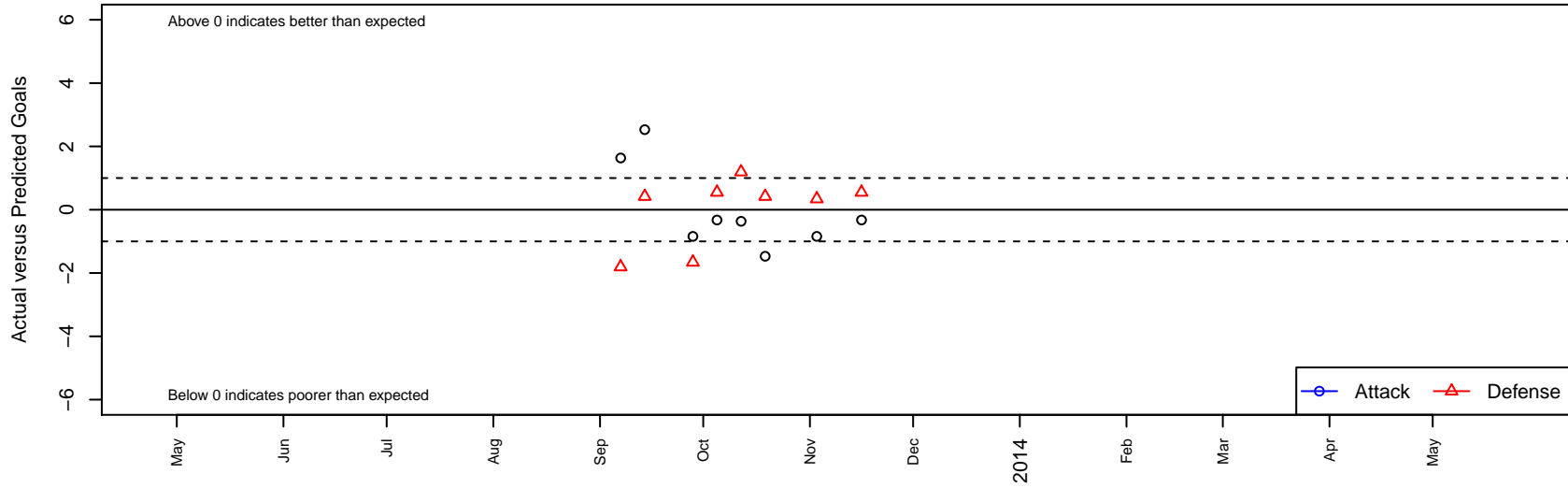
# Palo Alto 01 Blue G00

, CAN  
 G00 total strength=1345  
 attack=7.19 defense=6.09  
 alt names used:  
 Palo Alto Soccer Club Palo Alto 01G Blue

Venues played:  
 NorCal Premier F11 – Region 2 U13



**Palo Alto 01 Blue G00**  
 Dots are actual minus expected GF (blue circles) and GA (red triangles).  
 Blue line is smoothed change in attack strength. Red is smoothed change in defense strength.



	<b>date</b>	<b>home</b>		<b>away</b>		<b>venue</b>	<b>pred.home</b>	<b>pred.away</b>
10770	2013-11-16	Palo Alto 01 Blue G00	1	Alpine Strikers FC Red G00	0	NorCal Premier FI1 – Region 2 U13	1.33	0.55
10607	2013-11-03	Burlingame SC Rays G00	2	Palo Alto 01 Blue G00	0	NorCal Premier FI1 – Region 2 U13	2.34	0.84
10207	2013-10-19	Palo Alto 01 Blue G00	1	De Anza Force Blue G00	1	NorCal Premier FI1 – Region 2 U13	2.47	1.42
10015	2013-10-12	San Bruno Lowen 83 Aftershocks G00	1	Palo Alto 01 Blue G00	0	NorCal Premier FI1 – Region 2 U13	2.19	0.37
9830	2013-10-05	Alpine Strikers FC Red G00	0	Palo Alto 01 Blue G00	1	NorCal Premier FI1 – Region 2 U13	0.55	1.33
9668	2013-09-28	Palo Alto 01 Blue G00	0	Burlingame SC Rays G00	4	NorCal Premier FI1 – Region 2 U13	0.84	2.34
9345	2013-09-14	De Anza Force Blue G00	1	Palo Alto 01 Blue G00	5	NorCal Premier FI1 – Region 2 U13	1.42	2.47
9185	2013-09-07	Palo Alto 01 Blue G00	2	San Bruno Lowen 83 Aftershocks G00	4	NorCal Premier FI1 – Region 2 U13	0.37	2.19